



NOBEL
Chemical Industries

CHEMICAL INDUSTRIES

Annual Catalog

www.nobelchemicalco.com

OUR VISION

- Provide products that aid customer to chive him requires with best quality.
- In field of architecture we provide emulsion paints with different quality.
- In field of furniture we provide different type of wood pain like sealer and vanish and wood adhesive wood stain.
- In field of decorative we provide higt quality of dif-ferent of decorative paints.



ARCHITECTURE & EMULSION PAINTS



MARVEL 2000

Semi gloss latex

DESCRIPTION:

It is an acrylic-based, semi-gloss emulsion paint, especially formulated for interior and exterior applications. The product is designed to be flexible and elastic so as to cover cracks. It is non-yellowing and water resistant, easy to clean and durable as well.

TECHNICAL DATA:

Finish: Semi-gloss / gloss at angle 60° = 45 ± 5

Color: White

Viscosity: 16250 ± 1000 centipoise at 25° C.

Specific Gravity: 1.24 ± 0.05 gm/cm³

Solid Content by weight: 52 ± 2%

Coverage rate: 10 - 12 m²/L, depending on surface and paint film thickness.

Washability: More than 20000 cycle.

Drying time at: 25° C

- **Touch dry:** 20 - 30 min.
- **Complete dry:** 2 - 3 hours.



MARVEL 1000

Washable flat latex

DESCRIPTION:

It's a high-quality, emulsion paint, formulated from acrylic copolymer to give attractive matt effect on interior and exterior surfaces. It is highly-washable, easy to clean and durable as well. It also resists yellowing and cracks.

TECHNICAL DATA:

Finish: Matt

Color: White

Viscosity: 12900 ± 500 centipoise at 25° C.

Specific gravity: 1.45 ± 0.05 gm/cm³

Solid content by weight: 58 ± 2%

Coverage rate: 9 - 11 m²/L, depending on surface and paint film thickness.

Washability: More than 6000 cycle.

Drying Time at: 25° C

- **Touch dry:** 20 - 30 min.
- **Complete dry:** 2 - 3 hours.



MARVEL 900

Silk latex

DESCRIPTION:

It's a high-quality, emulsion paint, formulated from acrylic copolymer to give attractive matt effect on interior surfaces. It is highly-washable, easy to clean and durable as well. It also resists yellowing and cracks.

TECHNICAL DATA:

Finish: Matt

Color: White

Viscosity: 18600 ± 1000 centipoise at 25° C.

Specific gravity: 1.58 ± 0.05 gm/cm³

Solid content by weight: 69 ± 2%

Coverage rate: 6 - 8 m²/L, depending on surface and paint film thickness.

Washability: More than 2000 cycle.

Drying time at: 25° C

- **Touch dry:** 15 - 20 min.
- **Complete dry:** 2 hours.



MARVEL 800

Matt latex

DESCRIPTION:

High-quality, mat emulsion paint, formulated from acrylic copolymer to give attractive features on interior surfaces. The product is easy to clean and durable as well. It can be used as an undercoat for wallpaper and as a ceiling paint.

TECHNICAL DATA:

Finish: Matt

Color: White

Viscosity: 18000 ± 1000 centipoise at 25° C.

Specific gravity: 1.66 ± 0.05 gm/cm³

Solid content by weight: 68 ± 2%

Coverage rate: 4 - 6 m²/L, depending on surface and paint film thickness.

Drying time at: 25° C

- **Touch dry:** 15 - 20 min.
- **Complete dry:** 2 hours.



MARVEL 700

Water-based sealer

DESCRIPTION:

It's a water-based sealer, formulated from high quality acrylic copolymer and fillers which give excellent filling and good adhesion. It can be applied directly on concrete or after applying putty.

TECHNICAL DATA:

Finish: Matt

Color: White

Viscosity: 16100 ± 500 centipoise at 25° C.

Specific gravity: 1.31 ± 0.05 gm/cm³

Solid content by weight: 48 ± 0.05%

Coverage rate: 12-14 m²/L depending on surface and paint film thickness.

Drying time at: 25° C

- **Touch dry:** 15 - 20 min.
- **Complete dry:** 50 minutes hours.



MARVEL PUTTY

DESCRIPTION:

Putty is a ready mixed filler for interior uses. It has been carefully formulated to give excellent film smoothness before using emulsion and lacquer paints as well as superior ease of application and sanding. It also gives excellent brightness and filling properties, and contains anti-fungi materials.

TECHNICAL DATA:

Finish: Putty

Color: White

Viscosity: 280000 ± 10000 centipoise at 25° C.

Specific gravity: 1.72 ± 0.05 gm/cm³

Solid content by weight: 70 ± 2%

Coverage rate: 1.5 - 2 m²/kg depending on surface and paint film thickness.

Drying time at: 25° C

- **Touch dry:** 20 - 30 min.
- **Complete dry:** 2 hours.

Application: Tools Putty knife



DECORATIVE PAINTS

Products

- * **Produce high quality** (Decorative paints)
- * **Pearly** (Pearlescent effect)
- * **Elegance** (Velvet effect)
- * **Sandy** (Desert effect)
- * **Massa** (Diamond effect)
- * **Punto** (Metallic luster)
- * **Marble** (Marble effect)
- * **Crackle**
- * **Flower**
- * **Sky**

PEARLY

DESCRIPTION:

Highly innovative pearlescent product which provides pearl colors. It can enrich the appearance of texture effect and add a touch of beauty to your wall by using various types of pearl color.

TECHNICAL DATA:

Finish: Pearlescent effect

Color: Silver, Light Gold, Yellow Gold, Copper, Bronze, Maroon

Viscosity: 1000 ± 13000 centipoise at 25° C

Specific gravity: 0.98 ± 0.01 gm/cm³

Solid content by weight: 32 ± 1%

Spreading rate: 8 - 10 m²/kg

Drying time at: 25° C

- **Surface dry:** 20 minutes
- **Complete dry:** 2 hours.



ELEGANCE

DESCRIPTION:

Is aqueous internal decorative paint with base of acrylic emulsion. Given several beautiful Decorative forms similar in shape Fabric (velvet) available in various colors. It reflects with lighting. In this case, it shows the beauty and elegance. Though the moderate degree of its shine.

TECHNICAL DATA:

Finish: Pearlescent effect

Color: Silver, Light Gold, Yellow Gold, Copper, Bronze, Maroon

Viscosity: 1000 ± 13000 centipoise at 25° C

Specific gravity: 0.98 ± 0.01 gm/cm³

Solid content by weight: 32 ± 1%

Spreading rate: 8 - 10 m²/kg

Drying time at: 25° C

- **Surface dry:** 20 minutes
- **Complete dry:** 2 hours.



SANDY

DESCRIPTION:

Highly innovative pearlescent product which provides pearl colors. It can enrich the appearance of texture effect and add a touch of beauty to your wall by using various types of pearl color.

beauty and elegance Though The moderate degree of its shin.

TECHNICAL DATA:

Finish: Pearlescent effect

Color: Silver, Light Gold, Yellow Gold, Copper, Bronze, Maroon

Viscosity: 1000 ± 13000 centipoise at 25° C

Specific gravity: 0.98 ± 0.01 gm/cm³

Solid content by weight: 32 ± 1%

Spreading rate: 8 - 10 m²/kg

Drying time at: 25° C

- **Surface dry:** 20 minutes
- **Complete dry:** 2 hours.



MASSA

DESCRIPTION:

Aqueous decorative paint, high-quality, containing granules pure compatible -like diamond to give the appearance of an impressive multi-formers suggestive luxury to be given to the sparkling form of his love and the magic of diamond, manufacturer of the finest global acrylic.

TECHNICAL DATA:

Finish: Pearlescent effect

Color: Silver, Light Gold, Yellow Gold, Copper, Bronze, Maroon

Viscosity: 1000 ± 13000 centipoise at 25° C

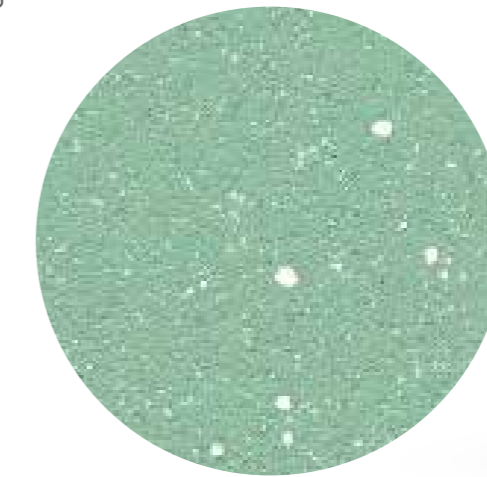
Specific gravity: 0.98 ± 0.01 gm/cm³

Solid content by weight: 32 ± 1%

Spreading rate: 8 - 10 m²/kg

Drying time at: 25° C

- **Surface dry:** 20 minutes
- **Complete dry:** 2 hours.



POUNTO metallic gold

DESCRIPTION:

- **Internal paint:** The perfect solution for use on interior surfaces.
- **Description paint:** A high long-term protection recommended by the specially on the inner surfaces of iron and wood.



STUCCO

DESCRIPTION:

- High-quality, decorative paint, based on special formula to provide texture effects in internal use.
- It adds a touch of beauty to your wall and resistance to washing and scrubbing.

TECHNICAL DATA:

Finish: Marble

Color: White, and can be Colored

Viscosity: 10000 ± 190000 Centipoise at 25° C

Specific gravity: 1.9 ± 0.05 gm/cm³

Solid content by weight: 70 ± 2%

Spreading rate: 1 – 1.5 m²/kg depending on surface and paint film thickness

Drying time at: 25° C

- **Touch dry:** 15 - 20 min.
- **Complete dry:** 2 hours.



CRACKLE

DESCRIPTION:

High-quality, decorative paint, based on special formula to provide texture effects in internal use. It adds a touch of beauty to your wall and resistance to washing and scrubbing.

TECHNICAL DATA:

Finish: Cracks

Color: Transparent, and can be Colored.

Viscosity: 9700 centipoise

Specific gravity: 0.1 gm/cm³

Solid content by weight: No less than 28.3%

Coverage rate: 6 m²/kg

Drying time at: 25° C

- **Touch dry:** 4 hours
- **Complete dry:** 24 hours



WOOD PAINTS

Products

- * Wood Stains
- * Wood Insulators
- * Wood Sealers
- * Wood Varnishes
- * Wood Fillers and Surfacer
- * Wood Glue



WOOD STAIN

DESCRIPTION:

Nobel stain is a high quality stain, formulated from high-quality dyes which can be diluted with water and thinner. It is very effective in coloring furniture and wood works as it emphasizes the natural beauty of wood.

TECHNICAL DATA:

Color: 20 colors

Raw materials: Organic dyes – Special resins – Solvents – Additives.

Drying time: Air temperature (20° C)

Surface drying: 2 – 3 minutes.

Complete drying: 5 minutes

Mixing ratio: 5 – 10 ml

Stain: 100 ml (Thinner, Alcohol or water).



SEALER

- WOOD SEALER
- NITROCELLULOSE SEALER
- POLYURETHANE SEALER 2K



NEO Wood sealer

DESCRIPTION:

Nobel Sealer is a high-build material to fill pores in wood surfaces. This product is especially designed to prepare wood surfaces before using varnish and to produce a smooth, hard, seal coat without any influence on natural wood grain. It boasts easy sanding and superior adhesion without any effect on the wood color.

TECHNICAL DATA:

Color: Clear – dark.

Viscosity: 32000 - 82000 centipoise at 25° C.

Specific gravity: $1 \pm 0.05 \text{ gm/cm}^3$

• **Surface dry:** 8 minutes.

• **Complete dry:** 1.5 hour.

Drying time

• **Coverage rate:** 6 – 8 m².

• **Film thickness:** 120 – 200 micron.

Dilution ordinary: Duco thinner.



NITROCELLULOSE SEALER



DESCRIPTION:

Nitrocellulose Sealer is a high-build material formulated from nitrocellulose to fill pores in wood surfaces. This product is especially designed to produce a smooth, hard, seal coat as a foundation before using Duco varnish without any influence on natural wood grain. It is characterized by high filling, easy sanding, and superior adhesion without any effect on the wood color.

TECHNICAL DATA:

Color: Clear – dark.

Viscosity: 80000 : 120000 Centipoise at 25° C.

Specific gravity: 1 ± 0.05 gm/cm³

• **Surface dry:** 8 minutes.

• **Complete dry:** 1.5 hour.

Drying time

• **Coverage rate:** 8 – 10 m².

• **Film thickness:** 120 – 200 micron.

Dilution ordinary: Duco thinner.

POLYURETHANE SEALER 2K

DESCRIPTION:

Polyurethane Sealer 2K is a high-build clear material formulated from polyurethane two components to fill pores in wood surfaces. This product produces a smooth, hard, seal coat as a foundation before using Duco varnish without any influence on natural wood grain. It boasts water, scrubbing and marine condition resistance.

TECHNICAL DATA:

Color: Clear.

Finish: Smooth & soft

Solid content by volume: 40 ± 2%

Specific viscosity: 0.99 kg/liter (mixed) ± 0.5 kg/liter

Coverage rate: 10 m² /liter.

Viscosity: 120 seconds / Ford Cup # 4 / 25° C.

Film thickness: 40 micron

Spraying time: 5 minutes.

Dilution polyurethane thinner: 20 – 25 % (depending on the application method).

Mixing ratio 2 polyurethane sealer: 1 Hardener : 20 – 25 % Thinner.

Drying time

• **Surface dry:** 2 – 3 hours.

• **Complete dry to sanding:** 5 - 6 hours.



WOOD VARNISH

- ALKYD VARNISH
- NITROCELLULOSE VARNISH (DUCO)
- POLYURETHANE VARNISH



ALKYD VARNISH CLEAR COAT

DESCRIPTION:

It is a modified, clear alkyd varnish. It boasts superior gloss, high hardness, adhesion, and supreme resistance to weather conditions and home chemicals (Alcohol, grease, and oilsetc). It is used to paint wood works, including kitchens, furniture and boats.

TECHNICAL DATA:

Finish: High gloss

Viscosity: 5 – 5.5 minutes / Ford Cup # 4 / 25° C.

Density: 0.91 ± 0.02 %

Gloss: 90 degree.

Drying time: 50 – 60 minutes at 25° C.

Repainting time after: 16 – 18 hours of painting the first coat.

Dilution mineral or vegetarian: Oil – Benzene.



NITROCELLULOSE VARNISH (Duco)



DESCRIPTION:

Vniwood Varnish is a high-quality Nitrocellulose varnish, based on specially-formulated dalkyd resins. This product boasts high transparency, excellent gloss, fast drying, superior hardness and scratch resistance.

TECHNICAL DATA:

Density: $1 \pm 0.1 \text{ gm /cm}^3$

Viscosity: 2000 – 3000 centipoise at 25° C.

- **Surface dry:** 15 minutes at 25° C.
- **Complete dry:** 30 minutes at 25° C.

Drying time:

- **Surface drying:** 15 minutes at 25° C.
- **Thinner proper:** Duco thinner.

Finish: Clear

MATT VARNISH

DESCRIPTION:

Soft Matt Varnish is a high-quality matt nitrocellulose varnish, based on specially-formulated dalkyd resins with special additives to give attractive matt finish, smooth touch and high resistance to friction and scrubbing.

TECHNICAL DATA:

Finish: Clear

Specific gravity: 0.92 kg /liter.

Viscosity: 4 minutes at 25° C.

Gloss: matt (5%).

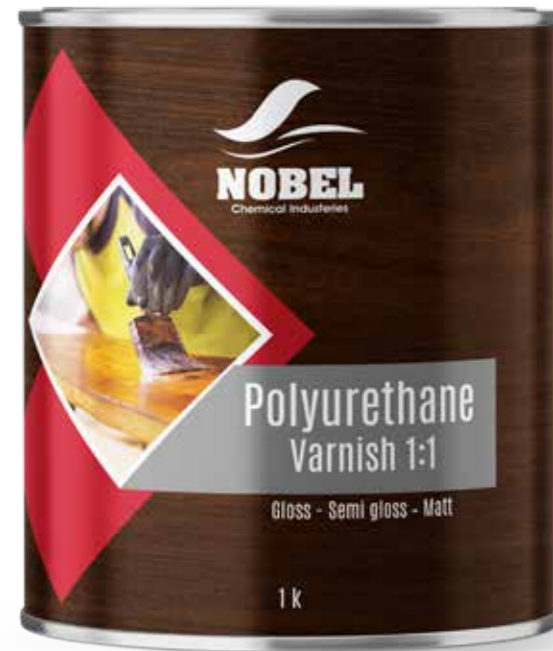
Drying time: 50 – 60 minutes at 25° C.

- **Surface drying:** 15 minutes at 25° C.
- **Complete drying:** 30 minutes at 25° C.

Repainting time: 5 minutes.



POLYURETHANE Varnish 1:1



DESCRIPTION:

Polyurethane Varnish 1:1 is a high-quality polyurethane varnish (Gloss - Semi gloss - Matt), based on two components of high-quality resins and special additives to give maximum performance and can be sanded after 24 hours. It boasts smooth touch, high hardness flexibility and resistance to weathering and scrubbing.

TECHNICAL DATA:

Raw materials: (Resins - Solvents - Special additives)

Drying time: (At a film thickness of 50 - 60 micron / air drying 25° C)

- **Surface drying:** 2 hours at 25° C.
- **Complete drying:** 4 - 6 hours at 25° C.

Film thickness: 50 - 60 micron per coat.

Coverage rate: 6 - 8 m² / liter.

Mixing ratio

- **1 polyurethane varnish:** 1 polyurethane hardener + 25 % polyurethane thinner.

Available time for repainting after mixing: 3 - 4 hours at 25° C

- **Flash-off time:** 5 minutes between coats.

POLYURETHANE Varnish 2:1



DESCRIPTION:

Polyurethane Varnish 2:1 is a high-quality polyurethane varnish (Gloss - Semi-gloss - Matt), based on two components of high-quality resins and special additives to give maximum performance and can be sanded after 24 hours. It boasts smooth touch, high hardness flexibility and resistance to weathering and scrubbing.

TECHNICAL DATA:

Raw materials: (Resins - Solvents - Special additives)

Drying time: (At a film thickness of 50 - 60 micron / air drying 25° C)

- **Surface drying:** 1 hours at 25° C.
- **Complete drying:** 24 hours at 25° C.

Film thickness: 55 - 70 micron per coat.

Coverage rate: 6 - 8 m² / liter.

Mixing ratio

- **2 Polyurethane varnish:** 1 Polyurethane hardener +25 % polyurethane thinner.

Available time for painting after mixing: 3 - 4 hours at 25° C.

FILLER 1K

DESCRIPTION:

Filler 1K is a one-component filler used to paint car panels. It is also used as a foundation on wood surfaces. It boasts maximum filling of wood pores as well as fast drying.

TECHNICAL DATA:

Color: Available in all colors except white

Density: $1 \pm 0.1 \text{ gm. / cm}^3$

Dilution: 25 – 30 % (Using good thinner).

• **Surface drying:** 20 – 25 minutes.

• **Complete drying:** 2 – 3 hours.

Drying time

• **Coverage rate:** 8 – 10 cm^3 / kg .

• **Gloss:** 85 ± 5 at 600



- FILLER 1K
- SURFACER
- POLYURETHANE SURFACER

SURFACER



DESCRIPTION:

Surfacers specially formulated from nitrocellulose and resins to be used directly before the top coat to get smooth and soft surface. This product boasts easy sanding and excellent filling properties for wood and metal to give smooth surface after sanding, avoiding Matt touch in the top coat.

TECHNICAL DATA:

Finish: Matt

Colors: All basic colors

Specific gravity: 1.4 gm. /cm³

Viscosity: 25.000 Centipoise at 25° C

Drying time

- **Surface drying:** 15 minutes.
- **Complete drying:** 30 minutes.

Flash-off time: 15 minutes.

POLYURETHANE SURFACER



DESCRIPTION:

Polyurethane Surfacers 2K with hardener is specially formulated to be used directly before the top coat to give smooth and soft surface. This product boasts excellent filling properties for wood to give smooth surface after sanding, avoiding Matt touch in the top coat. The surface becomes ready for painting 2K products.

TECHNICAL DATA:

Finish: Matt

Colors: All basic colors

Specific gravity: 1.4 gm. /cm³

Viscosity: 15.000 Centipoise at 25° C

Drying time

- **Surface drying:** 2 hours.
- **Complete drying:** 4 – 6 hours.

Flash-off time: 5 minutes.

HAMMER FINISH



DESCRIPTION:

Hammer Finish Atlanta 2000 is high gloss enamel, specially formulated from alkyd resin and aluminum paste with high-quality additives, featuring an excellent hammered pattern. It boasts fast drying, excellent mechanical properties and supreme resistance to weathering without any impact on paint finish.

TECHNICAL DATA:

Finish: Matt

Colors: Available in all colors except white.

Density: $1 \pm 0.1 \text{ gm. / cm}^3$

Dilution: 25 – 30 % (using good thinner).

• **Surface drying:** 20 – 25 minutes.

• **Complete drying:** 2 – 3 hours.

Drying time

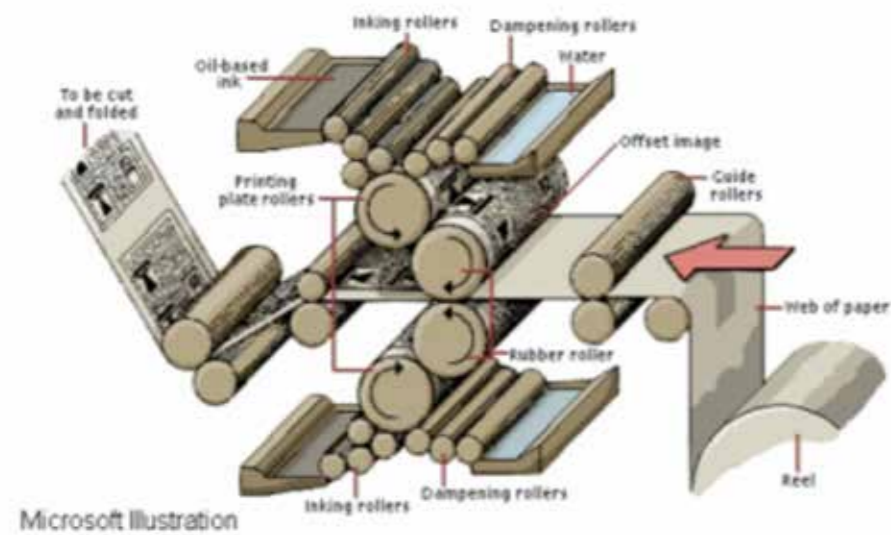
• **Coverage rate:** 8 – 10 cm^3 / kg .

• **Gloss:** 85 ± 5 at 600.



FOUNTAIN SOLUTION

Is a water-based mixture specially formulated to dampen lithographic printing plates before they are contacted by the inking rollers. In concentrated form, it is commonly referred to as fountain concentrate, fountain etch, or just etch. Most fountain concentrates today contain synthetic desensitizers



Microsoft Illustration



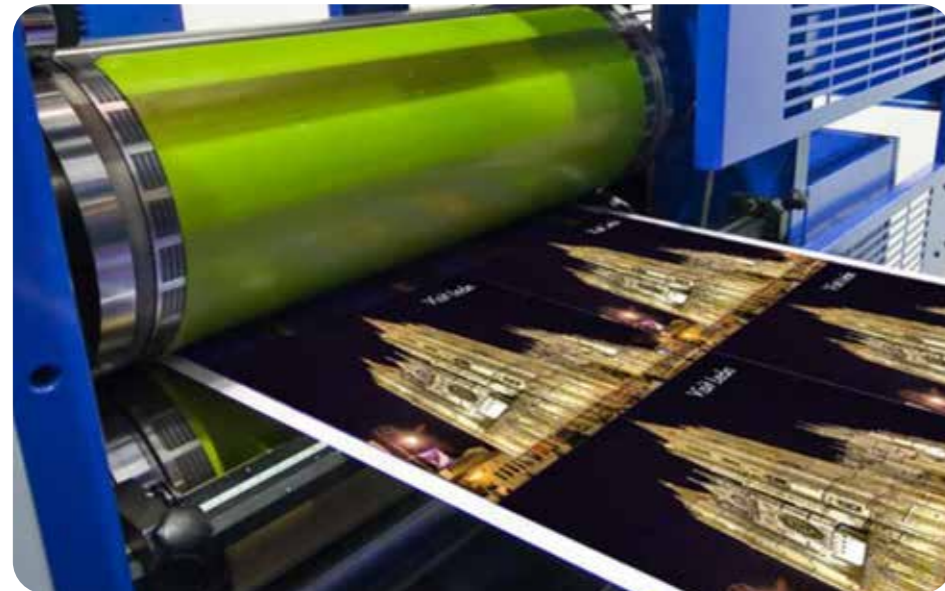
ALCOHOL FOUNTAIN SOLUTION

Are commonly formed by mixing a **fountain solution** concentrate with isopropyl **alcohol** and water. Although the amount of isopropyl alcohol varies, it is frequently as much as 35% by volume of the total **fountain solution**. The use of **alcohol** in press **fountain solutions** has many advantages in addition to reducing surface tension. It is efficient (**alcohol** concentrations as low as 5% can be used effectively on many presses) and it increases the viscosity of the **solution** allowing a thicker film to be applied to the rollers and/or the plate.



ETCHING SOLUTION

The most important technique for old master print is traditionally the process of using strong acid or mordant to cut into the unprotected parts of a metal surface to create a design in intaglio (incised) in the metal. ... The plate is then dipped in a bath of acid, technically called the mordant.



GUMMING SOLUTION

Gumming solution for offset plates. Ready to use for long term plate storage.
- GUM N: Natural Gum solution, Made from the highest quality raw material.



PLATE CLEANER

USED IN OFFSET PRINTING

Restoring a plate to operation often requires a formulated plate cleaner. Plate cleaners help to remove gums used to preserve surface properties. Without the use of plate.



PLATE DEVELOPER

A method for making lithographic printing plates which comprises the steps of: exposing, to light, a presensitized plate for use in making a lithographic printing plate provided with a water-insoluble image-forming layer formed on a substrate and developing the plate to remove non-image portions. Lithographic printing plates manufactured according to the method provide printed matter free of background contamination. If the pH value of the developer is controlled to not less than 12, both positive-working and negative-working presensitized plate can be treated therewith. Moreover, if the developer composition is employed, the working efficiency is greatly improved since it is not necessary to previously provide two kinds of developer compositions and two kinds of developing machines. Besides, initial cost can be saved and the space for installing such machines are also greatly reduced.



PHOSPHORIC ACID

Plate cleaner phosphoric acid
for electro photolithographic printing plate.



MASTER SILK SCREEN DILUENT

Used to reduce the viscosity of the ink, and make it more liquid so that it works better with it. Diluent can be used up to 3% of the weight of ink.



ADHESIVE

EXTRA STICK PSA Adhesive

DESCRIPTION:

Ready for use high quality adhesive manufactured with the finest raw materials. Especially recommended for lamination of glossy or mat varnished duplex paper with treated cellophane paper. When spread on surface to be laminated, it gives an even film without any defects which show on excellent wetting properties.

Base: Synthetic polymer resin dispersion

Color: White viscous emulsion

Safety: Neither flammable nor toxic – Solvent free

TECHNICAL DATA:

Before drying of the film

Solid Content: 40±2%

Viscosity: 13000-13500 MPA SP3

pH: 5-5.5

Setting time: Quick

After drying of the film

Appearance: Transparent

Elasticity: Flexible

Shelf life & Storage: Valid for one year from production date if stored in its original tightly closed container in a dry place away from direct sunlight and excessive heat.

Packing: 1 kg / Gallon 5 kg / Drum 60 kg



EXTRA BOND

Paper Glue

DESCRIPTION:

High quality adhesive ready for use specially developed for the collection of book parts each other with book cover.

Base: Synthetic polymer resin dispersion

Color: White viscous emulsion

Safety: Neither flammable nor toxic – Solvent free

TECHNICAL DATA:

Before drying of the film

Solid Content: 26 ±2%

Viscosity: 2 MIN BY CUP 10

pH: 4.5-5.5

Setting time: 15 min.

After drying of the film

Appearance: Semi- Transparent

Elasticity: Elastic

Shelf life & Storage: Valid for one year from production date if stored in its original tightly closed container in a dry place away from direct sunlight and excessive heat.

Packing: 1 kg / Gallon 5 kg / Drum 60 kg



SUPER BOND

Wood Adhesive

DESCRIPTION:

Ready for use high quality adhesive manufactured with the finest raw materials. Especially recommended for lamination of glossy or mat varnished duplex paper with treated cellophane paper. When spread on surface to be laminated, it gives an even film without any defects which show on excellent wetting properties.

Base: Synthetic polymer resin dispersion

Color: White viscous emulsion

Safety: Neither flammable nor toxic – Solvent free

TECHNICAL DATA:

Before drying of the film

Solid Content: 40±2%

Viscosity: 13000-13500 MPA SP3

pH: 5-5.5

Setting time: Quick

After drying of the film

Appearance: Transparent

Elasticity: Flexible

Shelf life & Storage: Valid for one year from production date if stored in its original tightly closed container in a dry place away from direct sunlight and excessive heat.

Packing: 1 kg / Gallon 5 kg / Drum 60 kg



U.V ADHESIVE

DESCRIPTION:

High quality adhesive ready for use specially developed for:

- Adhesion of UV treated paper labels.
- Adhesion of many types of paper on non-porous surfaces such as PP, PET and PVC.

It can be used for adhering packing materials in food and pharmaceutical industries as well as print houses.

It can also be used for gluing envelope's windows, tissue paper's box windows etc.

Easily applied, suitable for manual use or application by labeling machines, or injection machines.

Base: Copolymer resin emulsion

Color: White

Safety: Contains solvents

TECHNICAL DATA:

Before drying of the film

Solid Content: 60 ±2%

Viscosity: 60 Sec. /F4

pH: 5.5-6

Setting time: 4-6 Min

After drying of the film

Appearance: Transparent

Elasticity: Elastic

Shelf life & Storage: Valid for one year

from production date if stored in its original tightly closed container in a dry place away from direct sunlight and excessive heat.

Packing: 1 kg / Gallon 5 kg / Drum 60 kg



SUPER GLUE

DESCRIPTION:

Ready for use high quality adhesive manufactured with the finest raw materials.

Especially recommended for lamination of glossy or mat varnished duplex paper with treated cellophane paper. When spread on surface to be laminated, it gives an even film without any defects which show on excellent wetting properties.

Base: Synthetic polymer resin dispersion

Color: White viscous emulsion

Safety: Neither flammable nor toxic – Solvent free

TECHNICAL DATA:

Before drying of the film

Solid Content: 40±2%

Viscosity: 13000-13500 MPA SP3

pH: 5-5.5

Setting time: Quick

After drying of the film

Appearance: Transparent

Elasticity: Flexible

Shelf life & Storage: Valid for one year from production date if stored in its original tightly closed container in a dry place away from direct sunlight and excessive heat.

Packing: 1 kg / Gallon 5 kg / Drum 60 kg



CAR CARE



Products

- * Dashboard Cleaner
- * Engine Cleaner
- * Tire Shine
- * Wheel Cleaner
- * Wax & Wash
- * Scratch Remover

DASHBOARD CLEANER

Plate cleaner phosphoric acid
for electro photolithographic printing plate.



ENGINE CLEANER

Used to reduce the viscosity of the ink, and make it more liquid so that it works better with it. Diluent can be used up to 3% of the weight of ink.



TIRE SHINE

Plate cleaner phosphoric acid
for electro photolithographic printing plate.



WHEEL CLEANER

Used to reduce the viscosity of the ink, and make it more liquid so that it works better with it. Diluent can be used up to 3% of the weight of ink.



WAX & WASH

Plate cleaner phosphoric acid
for electro photolithographic printing plate.



SCRATCH REMOVER

Used to reduce the viscosity of the ink, and make it more liquid so that it works better with it. Diluent can be used up to 3% of the weight of ink.



Ministry of Trade & Industry
Chemistry Administration
Established in 1898

وزارة التجارة والصناعة
مصلحة الكيمياء
تأسست عام ١٨٩٨ م

الإدارة المركزية لمعايير القياس
الإدارة العامة لمعايير الأحياء والتكنولوجيا

Test Report

معلومات العميل/العميل	معلومات المنتج
الاسم: رقم العميل: تاريخ إصدار التقرير: محل الإنتاج:	اسم المنتج: رقم المنتج: تاريخ انتهاء الصلاحية: مكان الإنتاج:

الخواص الكيميائية	الخواص الفيزيائية
عدد الصفحات: كود العمل: وصف المنتج: تاريخ إصدار التقرير: مكان الإنتاج:	عدد الصفحات: كود العمل: وصف المنتج: تاريخ إصدار التقرير: مكان الإنتاج:

ملاحظات:
 تاريخ: ٢٠٢٢/٠٣/١٥

التوقيع:
 ٢٠٢٢/٠٣/١٥

CERTIFICATE
QUALITY MANAGEMENT SYSTEM
NOBEL FOR CHEMICALS

KILO 23 ALEXANDRIA CAIRO DESERT ROAD, AL AMERAYAH, ALEXANDRIA, EGYPT.

DESIGN, MANUFACTURING AND SALES OF ADHESIVE, PAINTS, POLISH, GLUE AND CAR CARE

This is to certify that the Quality Management System of the above mentioned Company meets the requirement of ISO 9001:2015

MSE: 650322A
Certificate Number

19 MARCH 2022
Date of Initial Registration

19 MARCH 2023
Date of Expiry

Signature:
 Signed On Behalf Of OS Middle East

OS Middle East
EGAC
IAF

OS Middle East
14 Domy Basma, Logo, El Manshi, Alexandria, Egypt
Email: info@osmiddleeast.com
Tel: 002 524445128

NATIONAL RESEARCH CENTRE
Paints, Plastic & Rubber Unit
Tel: 37620965

المركز القومي للبحوث
وحدة البويات والبلاستيك والمطاط
تلفون: ٣٧٦٢٠٩٦٥

التعليق على النتائج

اجازات حبة معجون اسمتي كوب بوش (أبيض) إنتاج (٢٠٢١/٠٩/١١) تشغلة رقم (١٢٣) كود المنتج (TP1) الواردة من شركة نوبل للكيماويات .. جميع الاختبارات المذكورة في المواصفات الفنية المرفقة.

وجميع النتائج السابقة مثل العينة الواردة الى المركز بمعرفة العميل لشركة نوبل للكيماويات' دون أدنى مسئولية على الوحدة أو المركز القومي للبحوث والمركز غير مسئول عن التورية.

التوقيع بالاختبار
د. سمير مرسى محمد

بمعد توقيع الباحث الرئيسي فقط...
رئيس الوحدة
أ.د. محمود أحمد عبد الظفار

أ.د. احمد اسماعيل حسين
٢٠٢٢/٠٣/١٥

TAHRIR ST, DOKKI, GIZA, 1262, EGYPT

NATIONAL RESEARCH CENTRE
Paints, Plastic & Rubber Unit
Tel: 37620965

المركز القومي للبحوث
وحدة البويات والبلاستيك والمطاط
تلفون: ٣٧٦٢٠٩٦٥

التعليق على النتائج

اجازات حبة البوية البلاستيك (إبراق) (٢٠٢٠) اللون ابيض (٢٠٢١/٠٩/١١) تشغلة رقم (١٢٥) الواردة من شركة نوبل للكيماويات .. جميع الاختبارات الواردة في المواصفة القياسية المصرية للدهانات المستحلبة رقم ١٥٢٣ لسنة ٢٠٢١.

وجميع النتائج السابقة مثل العينة الواردة الى المركز بمعرفة العميل لشركة نوبل للكيماويات' دون أدنى مسئولية على الوحدة أو المركز القومي للبحوث والمركز غير مسئول عن التورية.

التوقيع بالاختبار
د. سمير مرسى محمد

بمعد توقيع الباحث الرئيسي فقط...
رئيس الوحدة
أ.د. محمود أحمد عبد الظفار

أ.د. احمد اسماعيل حسين
٢٠٢٢/٠٣/١٥

TAHRIR ST, DOKKI, GIZA, 1262, EGYPT

NATIONAL RESEARCH CENTRE
Paints, Plastic & Rubber Unit
Tel: 37620965

المركز القومي للبحوث
وحدة البويات والبلاستيك والمطاط
تلفون: ٣٧٦٢٠٩٦٥

التعليق على النتائج

اجازات حبة المعجون (معمون لاتكس) تشغلة رقم (١٤٠) إنتاج (٢٠٢١/٠٩/١١) تشغلة رقم (LTX1) الواردة من شركة نوبل للكيماويات .. اجازات جميع بنود المواصفة القياسية المصرية للمعجون والمواصفة الفنية المرفقة رقم ٢٠٢٠/٦٦٢٣.

وجميع النتائج السابقة مثل العينة الواردة الى المركز بمعرفة العميل لشركة نوبل للكيماويات' دون أدنى مسئولية على الوحدة أو المركز القومي للبحوث والمركز غير مسئول عن التورية.

التوقيع بالاختبار
د. سمير مرسى محمد

بمعد توقيع الباحث الرئيسي فقط...
رئيس الوحدة
أ.د. محمود أحمد عبد الظفار

أ.د. احمد اسماعيل حسين
٢٠٢٢/٠٣/١٥

TAHRIR ST, DOKKI, GIZA, 1262, EGYPT

NATIONAL RESEARCH CENTRE
Paints, Plastic & Rubber Unit
Tel: 37620965

المركز القومي للبحوث
وحدة البويات والبلاستيك والمطاط
تلفون: ٣٧٦٢٠٩٦٥

التعليق على النتائج

اجازات حبة المعجون (معمون لاتكس) تشغلة رقم (١٤٠) إنتاج (٢٠٢١/٠٩/١١) تشغلة رقم (LTX1) الواردة من شركة نوبل للكيماويات .. اجازات جميع بنود المواصفة القياسية المصرية للمعجون والمواصفة الفنية المرفقة رقم ٢٠٢٠/٦٦٢٣.

وجميع النتائج السابقة مثل العينة الواردة الى المركز بمعرفة العميل لشركة نوبل للكيماويات' دون أدنى مسئولية على الوحدة أو المركز القومي للبحوث والمركز غير مسئول عن التورية.

التوقيع بالاختبار
د. سمير مرسى محمد

بمعد توقيع الباحث الرئيسي فقط...
رئيس الوحدة
أ.د. محمود أحمد عبد الظفار

أ.د. احمد اسماعيل حسين
٢٠٢٢/٠٣/١٥

TAHRIR ST, DOKKI, GIZA, 1262, EGYPT